



Issue 6 - Winter 2010
www.thenma.org.uk

The *Memmo*

The latest news and views from the National Memorial Arboretum Friends

Welcome to
the Winter issue
of your members'
magazine



Photo - Barry Turner

Inside this issue

Trees of the
Arboretum

Arboretum Talks

Wildlife Focus

Seasonal Recipe

Dates for
your diary

Around the
Arboretum

Where our Nation remembers

Welcome

Welcome to the Winter edition of The Memo, your quarterly Friends' magazine. In this issue you will have the opportunity to read about Arboretum volunteer Barbara Wain. Learn why she volunteers and the other activities that make her one very busy bee.

Here at the Arboretum we love it when you're able to come and visit us, but we are also aware that many of you may be unable to drop by as often as you would like. This month volunteer Roger Hailwood tells you about the Arboretum talks he conducts in the wider community, possibly in a neighbourhood near to you. Charles Bagot Jewitt also tells us about the Remembrance seminars he has attended this year.

If you're feeling the cold this Winter our seasonal recipe is sure to warm you up - check it out on page seven. New to The Memo is Richard Thorpe's feature "Trees of the Arboretum". Here he focuses on the Silver Birch and tells us a little about why it's significant to the Arboretum.

Be sure to read our regular Memo features including Wildlife Focus, Around the Arboretum and Memorial Focus which are scattered about this issue of The Memo. Finally, our events calendar is enclosed highlighting interesting dates for your diary.

Please remember that we are always eager to receive any articles, or news updates you would like to share with your Friends. Also if you're keen to receive regular Arboretum updates why not follow us on either Twitter or Facebook to receive up to the minute Arboretum information.

Lianne

(Volunteer Marketing and Fundraising Assistant)

NMA Friends magazine, Autumn issue

The Memo - Winter Edition

Editorial: Lianne Joynson
Volunteer Marketing and Fundraising Assistant

How to join?

Contact:

Friends Membership Team
National Memorial Arboretum
Croxall Road, Alrewas
Staffordshire DE13 7AR

Phone: **01283 792 333**

Email: friends@thenma.org.uk

Web: www.thenma.org.uk

Charity no. 1043992

In this edition of The Memo...

Barbara Wain - Interview _____ **4**

This month we had the opportunity to speak with Barbara Wain. She explained why she decided to volunteer at the Arboretum and told us about some of her many other interests.

Memorial Focus _____ **6**

This month this regular feature focuses on The Midlands Motorway Crash Victims Tree and the Northern Rhodesia Police Memorial.

Winter warmer - our seasonal recipe _____ **7**

Want to stay warm this winter? Try this local seasonal recipe.

Wildlife Focus _____ **8**

Read the latest wildlife news written by our resident expert, Richard Thorpe.

Trees of the Arboretum _____ **9**

Join us as we learn more about the Silver Birch and its significance to the Arboretum.

Around the Arboretum _____ **10**

Join us as we focus on highlights from around the Arboretum in this regular feature.

Remembrance _____ **12**

Hear from Charles Bagot Jewitt about the future direction of Remembrance.

Speaking on behalf of the Arboretum _____ **13**

Volunteer Roger Hailwood tells us more about the Arboretum's talks.

Dates for your diary - our forthcoming highlights _____ **14**

An ideal way to keep up to date with Arboretum events.

Arboretum Shop update _____ **16**

Also in this issue - remember to buy your limited edition commemorative Remembrance stamps and the "Soldier" by fourteen year old Natalie Tilson.

Please remember to let your friends, family and colleagues know about this unique centre for Remembrance. Further details can be found online at www.thenma.org.uk



Barbara Wain - Interview...

If you've had the opportunity to visit the Arboretum in the past three years you may have had the pleasure of meeting volunteer Barbara Wain. With the help of young NMA Friend Beth Campbell, Barbara explained the factors that affected her decision to volunteer at the Arboretum and what her volunteer role involves.

How did you first find out about the Arboretum, and why did you then choose to become a volunteer?

I found out about the Arboretum through my mother. When she died at 84 she had lots and lots of literature relating to the

Arboretum in her home. I didn't know anything about it before then. I later planted a tree in memory of my mother and father, in the Co-Op Celebration of Life Grove, especially as my father hasn't got a grave. Later when the Armed Forces Memorial opened and

there were calls for help I put my name forward to volunteer.

I understand your father was killed in action, how did this affect your life?

(Barbara's father was killed during WWII when his ship HMS Hermes was sunk)

I didn't know any different - I wasn't deprived in any way. It wasn't until I later had children of my own that I felt what it was like when I was a child and I didn't have a man in the house. Now I am older it really has affected me more.





How long have you been a volunteer?

Three years.

Did your father's death affect your decision to become a volunteer?

It didn't influence my decision. I came to visit my parents' tree originally. I have a link to the Arboretum, now it just feels right to volunteer.

What duties do you perform as a volunteer?

I work on the front desk on the till; I am also a guide and a buggy driver. I enjoy listening to people's stories - I'm a good listener.

Do you have a favourite memorial? If so what is it?

HMS Hermes has a tree which hasn't been dedicated yet, but there will be a dedication ceremony next year.

What do you do in your spare time? Do you volunteer anywhere else?

I've done an awful lot of fundraising. Having just retired from work I decided to run the London Marathon to raise money for a children's charity in Ghana. (Barbara completed the Marathon in just over six hours nonstop, five years later she decided to run the

marathon again raising £5,000. She has now hung up her running shoes.) I did the London marathon twice.

I do a lot of long distance walking. (Barbara has completed a number of long distance charity walks.) I also raise money for Hearing Dogs for the Deaf.

Memorial Focus...

Bringing you up-to-date with recently dedicated, and re-dedicated, memorials at the Arboretum

Midlands Motorway Crash Victims:

Dedicated on the 27 September to the memory of all those killed on the Midlands motorway network the tree, which has been planted in the RoadPeace Wood, was donated by the Central Motorway Police Group (CMPG). The CMPG sold tie pins to fund the living memorial. The service was attended by West Midlands Police Assistant Chief Constable Sharon Rowe and CMPG Commander Superintendent Dave Jones. The Ash tree has been planted to act as



a focal point assisting people in the bereavement process. It is often the case that families may wish to visit crash sites. However for safety reasons this cannot be allowed and this memorial gives both family and friends a site to visit to pay their respects.

Northern Rhodesia Police Memorial:

Located off Yeomanary Avenue the Northern Rhodesia Police Memorial was dedicated on 2 July 2010. The memorial is dedicated to all those who served in the Northern Rhodesia Police between 1911 and 1964, the Rhodesia Constabulary and the Barotse Native Police. The memorial particularly remembers those who died on duty or when on active service. It is made of black granite and the logo of the force features prominently on the top of the memorial. Rhodesia is now known as Zambia.



Warm your Winter...

This traditional Lobby recipe originates from Staffordshire and was the food of choice for poorly paid pottery workers in the county. If you have any leftover vegetables and meat from your Sunday lunch why not try this dish. After a minimal amount of preparation you can sit back and relax as your meal slowly cooks.

Ingredients:

- 1 chopped Spanish onion
- 5-6 carrots sliced into rounds
- 3-4 sticks of celery chopped into rounds
- 5-6 parsnips sliced into rounds
- 1 swede cut into inch sized cubes
- 5 big King Edward potatoes cut into cubes
- 3 packs of good quality lean stewing steak
- 1 large 5 litre stock pot
- Olive oil to fry the onion
- 2 beef OXO cubes
- Beef gravy granules

1. Fry onions in the oil in the stock pot, then add the steak and brown.
2. Add all the prepared vegetables to the pan and cover with water, the top of the water should rest 1cm from the top of the pan.
3. Add to the water 2 Beef OXO Cubes, then season with salt and pepper.
4. Turn the heat to full and bring the water to the boil, then simmer.
5. Simmer for 3 hours whilst occasionally adding the granules until the lobby is the correct consistency (the potatoes should thicken the liquid).
6. When cooked all the vegetables and the meat in the pan should be cooked and soft. Pierce a piece of swede to check it is cooked as this is the vegetable that will take the longest to cook in this particular recipe.



Tip: The recipe is best served piping hot and eaten with a crusty roll to soak up all the lovely juices. It's also good with pickled red cabbage!

We'd like to thank Nick Shotton for this issue's recipe. If you've got a local recipe to share with your friends please send it to us either by post or email friends@thenma.co.uk.

Wildlife Focus...

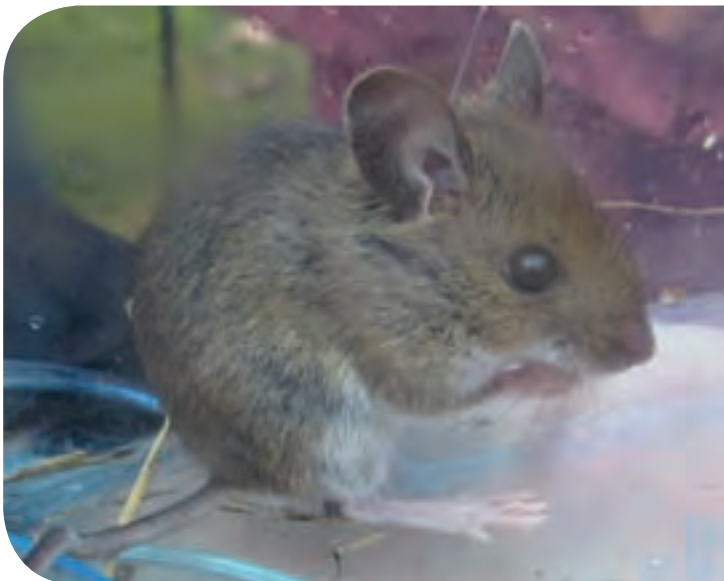
Richard Thorpe our resident wildlife expert tells us about some of the fabulous wildlife that you may see at the Arboretum this Winter.

Chris Reeves and I have been working on a tree themed walk. We are after all an arboretum! This walk should start to give both volunteers and visitors a bit more information about our trees.

I have started to do some wildlife discovery walks about once a month. The first one was popular and you never know what you might see on one of these walks.

We have had sighting of a red kite in the area so keep your eyes peeled for this distinctive bird of prey. If you visit the Arboretum over the next few months look out for flocks of fieldfares and redwings.

We will be having a Winter bird walk at the Arboretum on 9 January starting at 9.30am. This will be led by Lichfield RSPB and is guaranteed to be both enjoyable



and instructive. The bacon sandwiches always go down well afterwards! Please book through Lynne Barkas at the Arboretum if you would like to attend.

The recent Wildlife Watch Group meeting on mammals allowed us to see at close quarters several wood mice and a bank vole. No shrews were seen – these may have been affected by the cold weather early

on in the year.

Finally, can I make a plea to you all to feed your garden birds? Last year's winter was particularly harsh for birds and they need all the help we can give them.

Richard Thorpe

Trees of the Arboretum...

In this feature Richard Thorpe tells us about one of the many species of tree that grow at the Arboretum and its significant use as part of a memorial.

Silver Birch

This tree can be found in various parts of the Arboretum but is the one used exclusively in the RAF area. Why is this? Well it has silver white bark and its leaves dance upon the breeze. This reminds us of the silver fuselage of an aircraft and its passage through the air.

Another area of the Arboretum which makes use of the Silver Birch is the Diamond Wedding plot where the tree grouping is

in a diamond shape. The birch which is the hardiest of all broadleaves is actually a native of Iceland. It can live to be 100 years old and in Spring has small erect catkins which are the female flowers. The seeds are tiny and easily airborne which is why it rapidly colonises heathland. The leaves have a distinctive shape and are quite small.

Being a white tree the birch was said to have the ability to ward off evil spirits. Water collected from the tree is

called 'birch water' and can be made into birch wine.

The water, leaves and bark can all be used for various therapeutic purposes. The bark has a paper-like quality.

The Latin name is *Betula* and the birch is commonly known as 'the Lady of the Woods'.

Richard Thorpe



Photo - Sue Elliot

Where our Nation remembers

Around the Arboretum...



- KEY**
- A VISITOR CENTRE
 - B CHAPEL
 - C TOILETS
 - D CAR PARK
 - E FENOW BUILDING
 - F ARMED FORCES MEMORIAL



At 150 acres and with over 160 memorials, there is a lot to take in around the Arboretum.

1. The Showman's Guild of Great Britain

The Guild is the trade association for the travelling funfair industry. It represents over 4,000 members who operate the majority of travelling funfairs throughout Great Britain and Northern Ireland. The memorial is located between the Lichfield Wood and The Golden Grove and features a striking carousel horse.

2. Shackleton Association

The Avro Shackleton was a British long range patrol aircraft in service with the RAF and the South African Airforce from 1951 to 1991. The aircraft was used in anti-submarine, reconnaissance and air-sea rescue. The memorial was erected by the Shackleton Association and was dedicated in 2008 to all those who served with Shackleton squadrons and units. During its time in service 16 aircraft were lost with 150 fatalities. Grey granite was used in the memorial design to remind us of the rugged coats over which the Shackletons flew as well as the aircraft which were sometimes referred to as "the old grey lady."

3. Royal Logistic Corps

This memorial was dedicated on the 11 September 2000 and is a tribute to the Royal Logistic Corps. The memorial encompasses a grove as well as a plinth and the grove is surrounded by a variety of edible plants including bramble, crab apples and hawthorns. The corps, formed in 1993, has the responsibility of sustaining the British Army. The cap badge of the Corps features the words "Honi soit qui mal y pense" which is old French and can be translated roughly as "evil be to him who thinks evil."



Visit www.thenma.org.uk
for a full list of memorials onsite.

Remembrance

As the National Memorial Arboretum aims to become a world renowned centre for Remembrance, we took the opportunity to speak to the Arboretum's Chief Executive Charles Bagot Jewitt, who told us about a series of seminars which examined the nature and future of Remembrance.

As a year-round centre for Remembrance the National Memorial Arboretum is an important central location for the UK's Remembrance activities. What is Remembrance? What does Remembrance mean for different people and their culture? How will technological developments affect the future of Remembrance? These were just a small number of questions raised and answered in a series of seminars led by the Arboretum and held throughout the country over the past year.

In partnership with The Royal British Legion and a number of UK universities, the seminars were attended by around forty delegates from a variety of backgrounds all of whom were aiming to explore the development of Remembrance and in particular how Remembrance will remain relevant for future generations.

The development of new digital media platforms and the effects that development in this particular area may have on Remembrance was a widely discussed topic. With a large presence on digital media sites including Facebook and YouTube, younger generations have particularly embraced the opportunity to share their understanding of Remembrance practices.

In response to the seminars it is proposed to produce a book for publication in the future. It is hoped that the book will include pictures and anecdotes and will represent the complex and developing nature of Remembrance.

For further information please visit the Remembrance Seminars website, www.remembrancereseminars.org.uk and we will of course let you know when the Remembrance publication is released for purchase.



Photo - Mike Tigg.

Speaking on behalf of the Arboretum...

Many of you may already have experienced an Arboretum talk, either on-site or perhaps even off-site. For those of you who haven't, volunteer, Roger Hailwood told us why it's important to talk with communities and what you might expect.

In the beginning promotional talks to let people know about the Arboretum were undertaken by David Childs and Jackie Fisher who supported David in the early days. Jackie found herself inundated with requests to speak to a variety of groups, mainly in the locality, who wanted to know all about this new venture in Staffordshire. She turned to three of the volunteer guides for help, Tony Critchley, Maynard Scott and myself, and we soon found ourselves to be quite busy!

When Jackie approached me she asked if I would be prepared to do the occasional talk, eight years later I have made 274 "occasional" presentations on behalf of the Arboretum. The team of speakers has expanded to cope with the continued and increased demand. We all have our own way of making a presentation; some depend upon sheer eloquence to paint a picture of the Arboretum, others like myself depend upon the help of visual aids.

I started with a slide projector but now have moved into the digital age with a 'PowerPoint' presentation. There are still many people who have not heard about the Arboretum or who do not fully understand its nature and significance, so such talks are vital for the growth and development of the site. If you know of a group who would like to be informed, please

encourage them to contact the Arboretum with a request for a speaker.

If you're keen to know more about the Arboretum, its past and future in an Arboretum talk, please contact us on 01283 792 333. Speakers may also bring a variety of stock from the Arboretum shop which would be available for purchase.

Roger Hailwood



Dates for your diary - our forthcoming highlights...

Following our Christmas launch on the 28 November the Arboretum is hosting a variety of seasonal events over the festive period. Please visit www.thenma.org.uk for full listings or call 01283 792 333. Highlights for this Winter include:

SATURDAY 4 DECEMBER TO NEW YEAR

Remembrance Tree:

Remember a loved one this Christmas at the Arboretum. Choose from four different types of specially crafted wooden decorations then hang them on our Remembrance Tree in the Millennium Chapel. Decorations cost £2.00 and the accompanying card will allow you to record a message for your loved one.

(All proceeds go to the National Memorial Arboretum charity)

SUNDAY 28 - FRIDAY 24 DECEMBER

Freshly cut Christmas trees:

A variety of specially selected Christmas trees will be available for purchase at the Arboretum throughout December. Varieties include spruce, fir and pine.

Special offer: Buy a Christmas tree and claim a free hot drink and a mince pie (on display of receipt).

FRIDAY 17, MONDAY 20 & THURSDAY 23 DECEMBER

Christmas lunch with 1940's entertainment:

Enjoy a two course traditional Christmas lunch in the seasonally decorated Rose Room. Lunch will be followed by festive forties entertainment with the glamorous Lola Lamour.

Time: Tables set at 11.45am for lunch at 12 noon.

Entry: Fully inclusive package of £25.00 per person. Payment in advance is required.

Info: Available to pre-booked groups. Minimum numbers apply. Reservations essential.

Afternoon Tea with 1940's entertainment:

The perfect seasonal afternoon tea with sandwiches, crisps, cake and tea/coffee. Entertainment will be provided by Lola Lamour.

Time: Tables set at 3pm for tea at 3.15pm

Entry: Fully inclusive package of £18.00 per person. Payment in advance is required.

Info: Available to pre-booked groups. Minimum numbers apply. Reservations essential.





FRIDAY 17 DECEMBER

Carols at the Arboretum:

Bring your family and join us to sing along with carols and songs to the accompaniment of Burton Salvation Army Band. Refreshments will be available for purchase.

Time: 6:30pm

Venue: Beside the Visitor Centre (indoors if weather inclement)

Entry: Free entry but donations appreciated. Song sheet cost is £1.00.

WEDNESDAY 22 DECEMBER

The Nutcracker: A magical Christmas event enjoyed by all but particularly suitable for children aged 3 - 8 years. Festive activities include: story telling, sing-a-long songs, games, snack lunch, and a gift from Santa!

Time: 12 noon to 2pm

Entry: £8.50 per child, payment in advance required

Info: Children to be accompanied by a parent/guardian (free entry). Limited places, reservations essential

* FRIENDS EVENT*

TUESDAY 28 DECEMBER

Annual Friends' Christmas

walk: As featured in Issue five of the Memo. There is still time to register for the annual Friends' Christmas Walk featuring the Fauld explosion site and followed by an optional two course meal at the Cock Inn, Hanbury.

To book your place(s) email JThorpe@thenma.org.uk or call 01283 792 333.

SATURDAY 1 JANUARY

New Year's Day walks: The Arboretum is the perfect place for a refreshing winter walk, with a warm treat at the end.

Time: Site open 9am 'til dusk

Venue: Arboretum grounds

Entry: Free, but donations are appreciated. £5.50 per person for a guided walk with a soup and bread/roll lunch, or purchase a walk leaflet to explore at leisure.

SUNDAY 9 JANUARY

RSPB Winter bird walk:

Time: 9:30pm (assemble on the car park)

Venue: Arboretum grounds

Entry: Free, but a donation of £2.00 would be appreciated. Appropriate clothing including boots is recommended. Children are welcome but must be accompanied by an adult. Telescopic viewing is available.

SUNDAY 9 JANUARY

Epiphany Service: Service celebrating the visit of the Magi to the infant Jesus, supported by Light Harmony Choir

Time: 2.30pm

Venue: Millennium Chapel, followed by light refreshments in the Visitor Centre
Entry: open to Arboretum staff, volunteers and members of NMA Friends

SPECIAL OFFER

Monday- Friday, throughout January

Buy 1 get 1 free: Main meals from hot counter

To book or for more information on any of these events email info@thenma.org.uk or please call 01293 792 333.

Arboretum shop update, available to buy NOW...

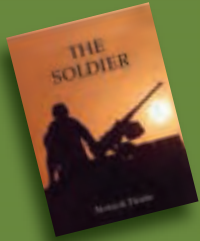
Commemorative Remembrance stamps

In association with the Royal Mail these limited edition commemorative stamps are available from most major post offices and the Arboretum shop. Priced at £13.50, the Royal Mail donates an unprecedented percentage (amounting to £9.00) to the NMA Appeal.



“The Solider” by Natalie Tilson

Fourteen-year-old Natalie’s short story about the experiences of a pair of siblings in Afghanistan is a moving read. Priced at £7.00, proceeds from the sale of this book will be divided equally between the National Memorial Arboretum and Help for Heroes charities.



To purchase either of these items contact the shop directly on 01283 792 333 or email shop@thenma.org.uk

National Memorial Arboretum merger with The Royal British Legion

The National Memorial Arboretum (NMA) is one of The Royal British Legion (TRBL) family of charities. To take full advantage of this relationship, the NMA Trustees have agreed in principle that the NMA should be operationally merged with TRBL. The merger will enhance the reputation of the NMA as the national centre of Remembrance, encouraging and promoting a wider understanding of all year round Remembrance across all communities.

A joint working group has been set up to deal with the wide range of issues that need to be resolved before the merger can be fully agreed and implemented. The group is working towards the merger taking place in April 2011.

The Royal British Legion recognises, and is proud of, the success of the NMA. Putting the strength of TRBL into the merged entity is positive for the NMA, its staff, volunteers, Friends and stakeholders and will help to secure the continued success and development of the site. We will keep everyone informed on progress. The NMA Appeal is making good progress and will continue unaffected by these proposals. All money raised will continue to be ring fenced to the development project.